

APRIL 2025

The quality parts for Land Rovers

Moto-Lita Steering Wheels

Moto-Lita's steering wheels are meticulously handcrafted in Britain, reflecting over 60 years of expertise and craftsmanship.

Suitable for use with - DA5434/DA5735/DA5736/DA8880/DA8881/DA8882/DA8883

The Mark Four with a smaller MOMO centre is based on the standard classic British leather rim steering wheel. It has a hand sewn leather rim with a comfortable rubber underlay.

DA5260

Momo 15" Expedition Mk4 Dished Leather Steering Wheel

Black Anodised
To fit PCD - 70mm



DA5265

Momo 14" Expedition Mk4 Dished Leather Steering Wheel

Black Anodised
To fit PCD - 70mm



DA5264

Momo 15" Mk3 Flat Steering Wheel

Mid-Brown Varnished
To fit PCD - 70mm



DA5261

Momo 15" Mk3 Dished Steering Wheel

Mid-Brown Varnished
To fit PCD - 70mm



DA5263

Momo 15" Mk3 Flat Steering Wheel

Dark Stain & Varnish
To fit PCD - 70mm



DA5262

Momo 15" Mk3 Dished Steering Wheel

Dark Stain & Varnish
To fit PCD - 70mm

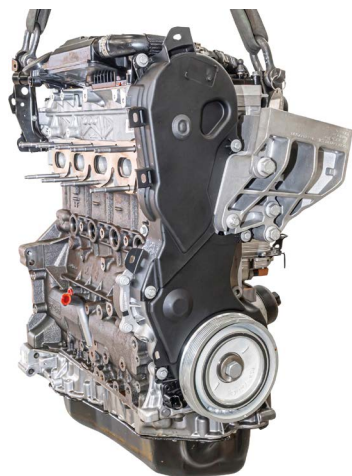


Stripped Engines

Stripped Remanufactured Engines

LR006856

Freelander 2 - 2.2 Diesel



LR028529

Freelander 2 - 2.2 Diesel

Discovery Sport - 2.2 Diesel

Range Rover Evoque - 2012 - 2018 - 2.2 Diesel

Rear Body Cappings

Defender 90 -

Station Wagon - less bulkhead

AMN710740GALV

Right hand side

AMN710750GALV

Left hand side



Head Bolt Kits

DA5270

Series - 2.25 Petrol - J onwards / 2.5 Petrol

554621	Bolt	5 off
279648	Bolt	4 off
247051	Bolt	9 off
ERC6821	Washer	18 off

DA5271

Series - 2.25 Petrol - up to H suffix

279648	Bolt	4 off
247051	Bolt	9 off
279650	Bolt	5 off
ERC6821	Washer	18 off

DA5272

Ninety / One Ten - 2.25D / 2.5D / 2.5TD (non-Tdi)

247051	Bolt	9 off
247683	Bolt	2 off
247723	Bolt	5 off
90518466	Stud	2 off
NH608061L	Nut	2 off
ERC6821	Washer	18 off

DA5270



DA5272



LR006856



Part numbers are used for identification purposes only and do not imply or indicate the identity of the manufacturer. E&OE.

britpart.com

APRIL 2025

The quality parts for Land Rovers

Super Soft Indoor Car Cover

DA2836GREEN

Series - LWB / Defender 110 - 1987 - 2016 /
Defender 110 - 2020 onwards / Discovery 1, 2, 3,
4 & 5 / Range Rover / Range Rover Sport / Range
Rover Velar

This super soft, super stretchy indoor car cover is made with Lycra blended, satin fabric which allows the cover to cling to the car whilst its subtle sheen gives an elegant finish. Tightly knitted fleece lined fabric provides excellent protection from dust and other pollutants as well as remaining breathable to prevent any build-up of condensation forming on the car.

The snug fit of these covers ensures that they not only look great but also provide exceptional protection. Low profile seams guarantee a sleek finish whilst displaying the contours and profile of your Land Rover.

1:76 Scale Models



DA1232

Series 1 - Flat Back / Green



DA3513

Series 3 Hard Top / Bronze Green



DA5245

AA Series 1 / Yellow



Image for illustrative purposes only

Ball Joint Boot & Clip Kit



DA5278

Front Axle Upper & Lower Ball Joint Boot & Clip Kit
A common problem with original rubber track rod end boots is perishing/cracking. This polyurethane boot will not perish/crack like normal rubber so will give you a much longer service life.

Discovery 2 - FTC3570 Upper & FTC3571 Lower
Ball Joints
Range Rover P38 - Upper & Lower Ball Joints

Support Bracket



NRC5478GALV

Galvanised Chassis Frame Body Mounting Support
Bracket
Defender 110/130 - 1987 - 2016

XS Water Pumps

104123461

Discovery Sport
Range Rover Evoque - 2019 onwards

122123456

Range Rover Evoque - 2019 onwards



104123461

Girling Caliper Repair Kit



STC1280GIRLING

Defender - LA930456 onwards
Front Brake Caliper Seal Kit
46mm pistons



Part numbers are used for identification purposes only and do not imply or indicate the identity of the manufacturer. E&OE.

britpart.com

APRIL 2025

The quality parts for Land Rovers

Front Axle Bracket Kits



Right Hand Side

DA5256

47mm

Defender - up to 200Tdi

Discovery 1 - up to 200Tdi

Range Rover Classic - up to 200Tdi

DA5258

54mm

Defender - 300Tdi onwards

Discovery 1 - 300Tdi onwards

Range Rover Classic - 300Tdi onwards

Left Hand Side

DA5257

47mm

Defender - up to 200Tdi

Discovery 1 - up to 200Tdi

Range Rover Classic - up to 200Tdi

DA5259

54mm

Defender - 300Tdi onwards

Discovery 1 - 300Tdi onwards

Range Rover Classic - 300Tdi onwards

Dog Guard

VPLES0650

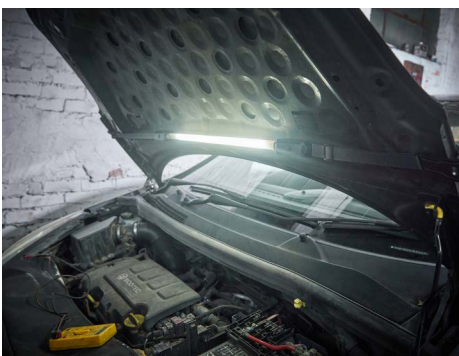
Dog Guard

Defender 130 - 2020 onwards - 40:20:40 3rd Row

Full Height



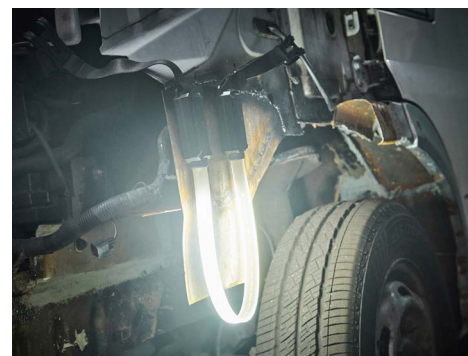
Ring MAGflex 1000 Super Flex Utility Light



DA7175

Direct light exactly where it's needed!

- > Fully flexible 1000 Lumen Light Strip
- > Three Light Settings and Emergency Red Mode
- > Attach with magnets or under bonnet hooks
- > Rechargeable via USB-C
- > 3 light settings, including an emergency red light
- > IK07 impact rated
- > Charging indicator
- > Soft touch, ergonomic design



Ring MAGflex 1000 Super Flex Utility Light is a groundbreaking innovation in flexible lighting solutions. The unique design allows it to be used as an under-bonnet lamp with its detachable elasticated hooks, providing hands-free illumination in tight spaces. Additionally, the powerful magnetic connections at both ends enable secure attachment to any metal work surface, such as a car, ensuring stability and convenience during use.

Durable and practical, the Ring MAGFLEX 1000 SUPER FLEX UTILITY LIGHT is the ultimate lighting solution for those who demand flexibility, brightness, and ease of use in their work and activities. Full details available online.

Britpart Stein Mug

DA8126

Holds 3/4 of a pint of tea or coffee! Limited Stock



Galvanised Support Bracket

NRC4661GALV

Galvanised Support Bracket

Defender 110/130 - 1987 - 2016



Anti-roll Brackets

DA5254

Right Hand Side / Front Axle
Defender
Discovery 1
Range Rover Classic

DA5255

Left Hand Side / Front Axle
Defender
Discovery 1
Range Rover Classic



DA5254



Part numbers are used for identification purposes only and do not imply or indicate the identity of the manufacturer. E&OE.

britpart.com